



# LTKL

LINGKAR TEMU  
KABUPATEN  
LESTARI

## COLLABORATION TO PRESERVE ENVIRONMENT AND IMPROVE COMMUNITY WELFARE

Lingkar Temu Kabupaten Lestari (LTKL) is an association of district governments under APKASI formed and managed by district governments to establish sustainable development which protects the environment and improves the welfare of the communities through mutual cooperation. Since its establishment in July 2017, LTKL currently has 9 member districts in 6 provinces across Indonesia and works side by side with 21 global, national & regional multi-stakeholder partner networks voluntarily joining to achieve a common goal. LTKL General Assembly in 2019 and 2020 decided that a 'sustainable economy' is a priority for LTKL members to achieve the national target of obtaining quality investment, creating jobs and preventing disasters. LTKL functions as support for district members to achieve this goal.

### VISION

District members are able to manage administrative areas sustainably in accordance with the national target of obtaining quality investment, creating employment opportunities and preventing disasters.

### MISSION

Protect and restore the function of forests, peatlands and other important ecosystems in the administrative areas of LTKL member districts.

### APPROACH

Cooperating with all parties to transform into districts capable of protecting the environment while at the same time improving the welfare of its peoples through improvements in the supply chain and the downstream phases of community-based, environmentally & socially friendly industries.

## OUR WORK

### CONNECT INCENTIVES WITH DISTRICTS



LTKL connects districts with a myriad of incentive opportunities to support the districts' consistent transformation into sustainable and competitive districts. Variety of incentive opportunities include public, private & innovative blended options.

### INCREASING CAPACITY OF DISTRICTS



LTKL through its partner network provides 'blueprints' and hosts capacity building programs for district members to transform into sustainable districts and enhance its regional competitiveness, focusing on LTKL 5 key pillars.

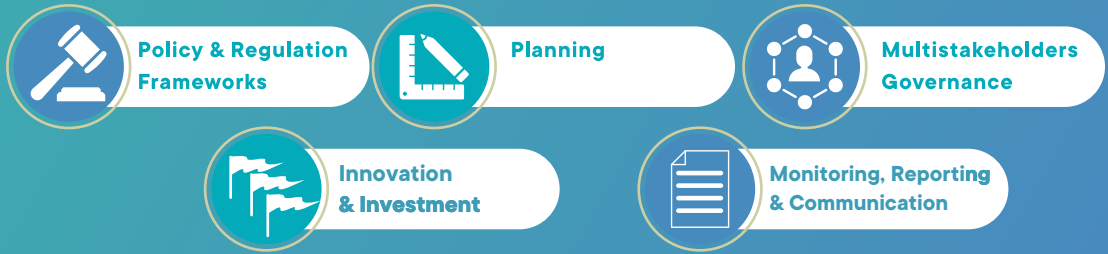


### DEVELOPING NETWORKS & COMMUNICATION FOR SUSTAINABLE ECONOMIES

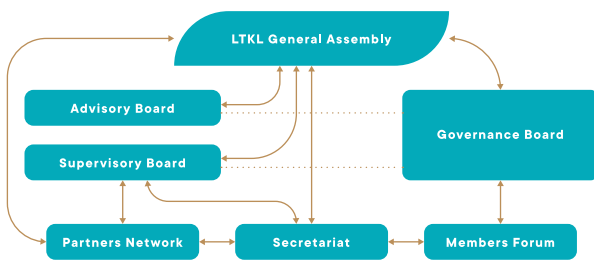
LTKL facilitates spaces for stakeholders to build narratives and collaborate through various communication and co-creation activities leading towards collective actions, as shown on 'Peta Gotong Royong' - an interactive catalogue designed to communicate progress of each district's sustainable transformation journey through multi-stakeholders collective actions.

# 5 PILLAR OF JURISDICTIONAL APPROACH

As a forum, Lingkar Temu Kabupaten Lestari uses jurisdictional approach and focuses its activities on 5 (five) key pillars of governance, namely:



## LINGKAR TEMU KABUPATEN LESTARI STRUCTURE



Lingkar Temu Kabupaten Lestari is a district association that takes the form of a members forum, structured into a Governance Board, mandated to Bupati as district member representative; Advisory Board; Supervisory Board; Partners Network; and a Secretariat as its backbone for day-to-day activities. Each of these elements have a responsibility to the General Assembly, that serves as the main deliberative and decision making organ of the forum.

## LTKL DISTRICT MEMBERS



Active members

## MAIN PARTNERS NETWORK

Conservation Strategy Fund (CSF), Daemeter, Forum Pengembangan Pembaharuan Desa (FPPD), Hutan Kita Institute (HAKI), Proforest, Qlue, Rainforest Alliance, Serikat Petani Kelapa Sawit (SPKS), Winrock International, World Resources Institute (WRI) Indonesia, Perkumpulan Elang, Yayasan Inisiatif Dagang Hijau, Yayasan Koaksi Indonesia, Yayasan Madani Berkelanjutan, National Centre for Sustainability Reporting (NCSR), Jejak.in, Yayasan Rumah Energi, Carbon Disclosure Project (CDP), Terra Komunika, Landscape Indonesia, Socialica, Supernova Ecosystem, Earth Innovation Institute (EII), Forum Petani Kelapa Sawit Berkelanjutan (FORTASBI), Alam Siak Lestari (ASL), Sanggar Inovasi Desa (SID).